



अखिल भारतीय आयुर्विज्ञान संस्थान, गोरखपुर All India Institute of Medical Sciences, Gorakhpur

(स्वास्थ्य एवं परिवार कल्याण मंत्रालय भारत सरकार द्वारा स्थापित एक स्वायत्त निकाय)
(An autonomous organization under the Ministry of Health & Family Welfare, Govt. of India)

Ref. No. AIIMS/Gkp/EW/25-26/34

Date: 12-06-2025

Subject: Proposal for the CAMC (COMPREHENSIVE ANNUAL MAINTENANCE CONTRACT) Of Stage lighting and Furnishing, Gorakhpur on proprietary basis.

1. The CAMC services for stage lighting in the Auditorium at AIIMS Gorakhpur. The services will cover stage equipment, stage control systems, and stage lights, as manufactured and supplied by M/s Effectron Luminex Ltd., D-19/1, Okhla Industrial Area, Phase-II, New Delhi – 110020. The proposal submitted by M/s Effectron Luminex Ltd., along with the Proprietary Article Certificate certified by the user department, is attached.
2. The above-mentioned document are being uploaded for open information to submit their objections comments, if any firm any manufacturer regarding proprietary nature of the equipment/ accessories/ item within 7 days from the date of issue/ uploading of the notification.
3. The comment should be received by office of administrative officer, Medical College at AIIMS, Gorakhpur on or before 19th June 2025 up to 17:00 Hrs. failing which it will be presumed that any other vendor is having no comment to offer and case will be decided on merits.

S/D

**Superintending Engineer
AIIMS Gorakhpur**

Enclosure: Related Documents enclosed

कुनराघाट, गोरखपुर, उत्तर प्रदेश-273008
Kunraghat, Gorakhpur, Uttar Pradesh 273008

PROPRIETARY ARTICLE CERTIFICATE (PAC)

Proprietary Article Certificate (PAC) for Stage Equipment, Stage Control System, Stage Lights, Manufactured, Supplied and Installed by Effectron Luminex Ltd, at AIIMS Gorakhpur Auditorium in Uttar Pradesh.

This PAC certificate is issued to certify that items listed below were Manufactured, Supplied & Installed at **AIIMS Gorakhpur Auditorium**. These **proprietary products** were exclusively manufactured, and developed by **Effectron Luminex Ltd.** at our manufacturing facility located at Okhla, New Delhi

Custom Items:

1. **Curtain System**, for Main / Mid / Rear curtains. The system includes custom designed components like Curtain Tracks, Pulley and Trolley System, Gearbox and Curator Mechanism, Opening / Closing Cut Off Safety Mechanism. The Curtain System was supplied with Control & Remote Panel, to control opening / closing of the curtain, with Emergency Shut-Off Switch.
2. **Light Bar System**, to provisions suspension of Stage Lights, Microphones and stage other equipment required during Stage Performance. The Light Bar System was custom designed for AIIMS Gorakhpur Auditorium, which consists of Electro-Mechanical components, including Gearbox Mechanism, Pulley / Rope System, Height Adjustment System, Safety Cut Off Switch and more... The Light Bar System was supplied complete with Electrical Panel to control the height of Stage Lights & Microphones, during operation.
3. **Electrical Control Panels**, for Power Distribution, Control of Stage Equipment, Emergency Shut-Off, and Remote Control of Stage Equipment's... These Electrical Control Panel(s) were designed, manufactured, and installed as per site requirement, based on client's specification.
4. **Stage Lights**, Different Types of Stage Lights, like PAR, Fresnel, Profile, Blinders... complete with Optical, Electrical and Mechanical System, was manufactured and supplied by Effectron Luminex Ltd for use at AIIMS Gorakhpur Main Stage. In addition, Effectron ensured inter-operability of Stage Lights with "Philips Stage Light Control Desk", "Philips DMX Splitter" for programming and control of lights in real-time.
5. **Cyclorama Screen, FOH Bar, Wings, Ladder and other Items**, in addition to above items, large number of custom-manufactured items which were supplied at AIIMS Auditorium. Some of these include FOH Bar, Cyclorama Screen, Wings, Ladders, Clamps, Junction Box complete with DMX Connector and Termination for distribution of Control Cables...

We hereby certify that, Effectron Luminex Ltd, designed, manufactured above mentioned products to meet the functional and operational requirements at AIIMS Gorakhpur Auditorium Project. Furthermore, we declare that items mentioned above are not available from any other manufacturer or supplier. All components have either been Custom Developed or Customized and Manufactured by Effectron Luminex Ltd. Finally, we also certify that Effectron ensured "System inter-operability" of above-mentioned hardware and software components, which was supplied and installed by Effectron Luminex Ltd.

This PAC certificate is issued to facilitate procurement under applicable rules and guidelines of AIIMS Gorakhpur.



Director
Effectron Luminex Ltd.

May 9th 2025

Curtain System

Curtain Rigging System, designed for Horizontal and Vertical Openings. System is available in both Manual and Motorized Version.



Products



Blackout Curtain
System, Motorized



Curtain System for
Auditorium, Theatres



Curtain System for Church,
Chapel and House of Worship

Curtain System



Single Track Motorized
Curtain System
Model# CRT51-CR55



Double Track Motorized
Curtain System
Model# CRT51-CR56



Curved Track for
Motorized System
Model# CRT51-CR57



Galvanized Steel
Cable
Model# CRT52-GSR



Master Curtain
Trolley
Model# CRT51-MTrolley



Slave Curtain
Runners
Model# CRT51-Runner



End Stopper
Model# CRT51-END



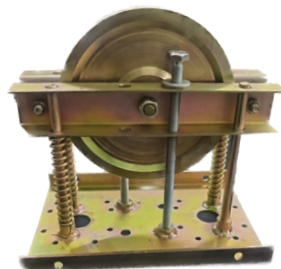
Track
Suspender
Model# CRT51-SUS



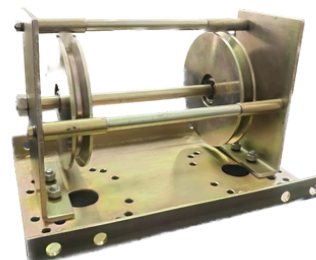
Curtain Drive
System - Manual
Model# CRT52-DRV-MAN



Curtain GearBox
Drive - Motorized
Model# CRT52-PRIM-DRV



Tension Pulley
Model# CRT51-TP63



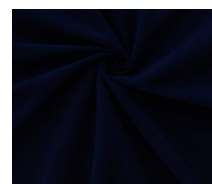
Diverter Pulley
Model# CRT51-DP63



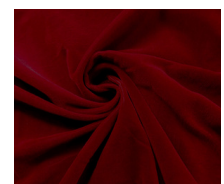
Sec. Drive Mechanism
Model# CRT52-SEC-DRV



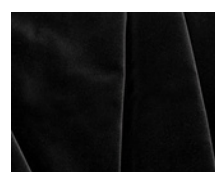
Curtain Track System for Blackout Rooms
Model# CRT51-BR31



Rear Curtain
Model# CRTF-523



Velvet Main Curtain
Model# CRTF-521



Blackout Curtain
Model# CRTF-524



Noise Absorbing
Soundproof Curtain
Model# CRTF-525

Electrical System

Effectron manufactures specialized electrical system, digitally controlled, to manage stage lighting, curtain movements, and precise positioning and power for light bars.



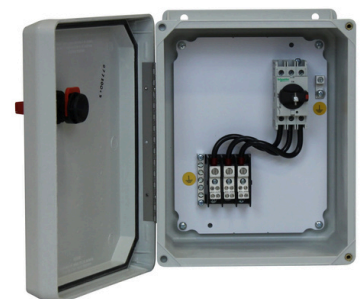
Products



**Power Distribution
Panel**



**Motor Control Panel /
Remote**



Junction Box

Power Distribution + Motor Control Panel



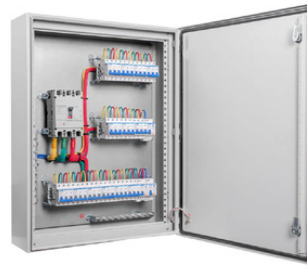
Power Distribution Panel

Model# EE411-3Ph



Power Distribution Panel

Model# EE412-2Ph



Power Distribution Panel

Model# EE413-3Ph



Motor Control Panel

Model# EE421-10Ch



Motor Control Panel

Model# EE422-6Ch



Motor Control Panel

Model# EE423-10Ch



PowerCon Distribution

Model# EE423-12Ch



Junction Box

Model# EE431



DMX Junction Box

Model# EE441



Motor Junction Box

Model# EE432



PowerCon Dist. Box

Model# EE433

DMX / MIC Receptacle Box

3/5 Pin XLR Receptacle Box 1/2/3/4/6 way

SPECIFICATIONS



TYPE	XLR 3/5 Pole Socket
Usage	Mic / DMX Receptacle

15A Power Junction Box for power distribution on Light Bars / floor socket Box, etc.

SPECIFICATIONS



TYPE	1,2,4 way
Usage	15A socket box for power distribution

*Power/DMX Sockets May Vary from the image.

For Further Queries:
Effectron Luminex Ltd.

D-19/1, Okhla Industrial Area, Phase-II, New Delhi 110020 India
Website: - www.effectron.co.in email: - info@effectron.co.in email: - info@effectron.co.in

www.effectron.co.in



New Delhi; Chandigarh; Jaipur

Wings Specification

Wings in an auditorium separates the backstage area from the performing stage area. Wings provide an entry / exit for a performer from Stage acting area. It's through these wings that sets / props are brought and taken away. Cross Light ladder is suspended and hidden from the audience through these wings. Smoke / Bubble and fog machines are often kept between the wings. Design and type of Wing is critical to the stage. It is often made rotating on its axis.

There are various types of wings, viz:

- 1. Free Falling / Curtain Type / hanging wings,**
- 2. Sliding Wings,**
- 3. Foldable Wings,**
- 4. Swivel Type wings**

The selection of type of wing & quantity depends upon the usage of the

- a.) Performing area,**
- b.) Consultants design and**
- c.) Budget of the space.**

Free Falling Wing: Is a Fabric Wing which is suspended on a GI Pipe Bar / Curtain Rail. Fabric is stretched over the pipe. The wing can be pleated or a stretched wing which is again stretched over a bottom pipe. It is usually used in a budget / school auditorium.

Sliding Wings: As the name suggests wings are designed to enable a horizontal movement in a predefined direction. The movement usually is small max to 600mm This movement enables the Size of the stage / Performing area to increase / reduce depending upon the requirement of play / speech or the occasion.

Foldable wings: In some spaces, reduction in stage by 1200 mm is not deemed fit, in those stages an additional reduction of 900 mm of stage is achieved through foldable wings where 450mm of hinged wing which is normally folded gets open.



For Further Queries:

Effectron Luminex Ltd.

D-19/1, Okhla Industrial Area, Phase-II, New Delhi 110020 India

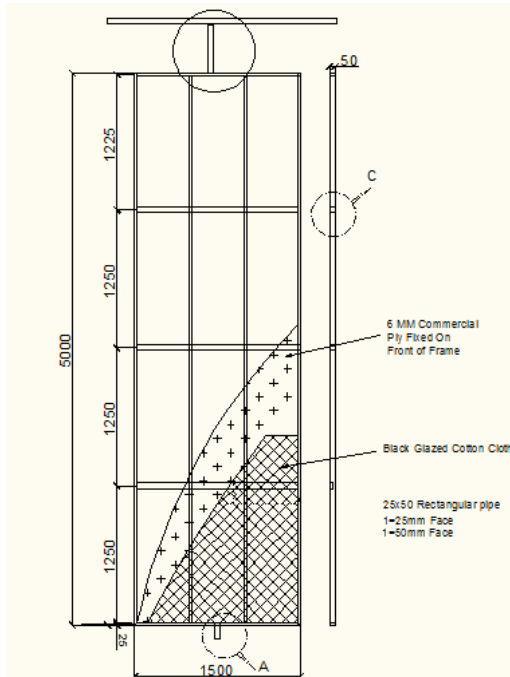
email: - info@effectron.co.in

www.effectron.co.in



New Delhi; Chandigarh; Jaipur

Swivel Wings: These wings are most commonly used in theatres. The Wing is centrally pivoted and rotates 360°. The advantage of this wing is that bulky and large props can also move in by keeping the two adjoining wings parallel.



Specification for Swivel Wing:

The Wing frame is made from 50x25mm MS Tube of 18 G. Pipe framework is constructed through a welded rectangular frame work. The Structure is fixed with overhead pivot track complete and duly painted
One side of the structure is fixed with 6mm Commercial ply using Self tapping Screw and CSK head. The Ply is painted black and then covered with Glazed Cotton Fabric.

For more Details and Enquiry on other types please contact at the address mentioned below

For Further Queries:

Effectron Luminex Ltd.

D-19/1, Okhla Industrial Area, Phase-II, New Delhi 110020 India

email: - info@effectron.co.in

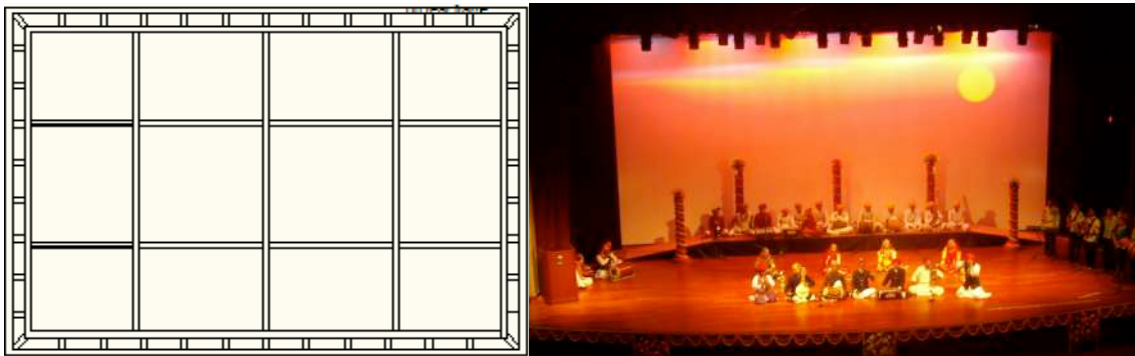
www.effectron.co.in



New Delhi; Chandigarh; Jaipur

Cyclorama Frame and Projection Screen Specification

Cyclorama Screen is the last background medium which is present in an auditorium. This can be made using cloth, PVC screen and is available in both perforated and nonperforated medium. This screen is usually White in color and provides an infinite vision and a canvas for Lighting designer to create virtual reality using combination of lights and projections. The screen is stretched over a custom-made frame made from GI Pipe Frame. The screen if used for pure CinemaScope viewing is desirable to be made in a curved format with Hi-Gain material, however, for multi usage screen viz: Theatrical / cinema/ conferences will be a flat screen.



Cyclorama Frame Structure Sunset being created on a cyclorama screen

Cyclorama Frame Mechanical

Cyclorama Frame is a dual frame structure made from GI pipes (42, 32 and 25mm Outer dia.) in welded self-supporting construction. This frame is grouted with rear wall and stage floor. The frame is strengthened from the ceiling where supports are available. For Cinema-scope screens the shape of the screen is curved so that better viewing angle is created. The radius of curvature is a function of size and is calculated at the design stage. Frame is constructed in such a way that ropes which are used for stretching the cyclorama screens are tightened on the frame and the screen is stretched over the frame

Fabric

For Further Queries:

Effectron Luminex Limited
D-19/1, Okhla Industrial Area, Phase-II, New Delhi 110020 India
email: - info@effectron.co.in

www.effectron.co.in



New Delhi; Chandigarh; Jaipur

Various types of Fabrics are available for stretching on the screen, depending upon the requirement and the budget in hand, any one of the available options can be used

Screen type	Application Area	Screen Type	Gain
Cotton Fabric	School Auditoriums	Flat	0.6-0.8
Matt White PVC	School/ Professional Auditorium	Flat	0.8-1.0
Matt White Perforated, perforation to be 1-2% of the screen area	For Cinema Viewing where viewing distance is less than 6mtrs.	Flat	0.8-1.0
Matt White Perforated, perforation to be 5% of the screen area	For Cinema Viewing where viewing distance is greater than 6 mtrs.	Flat	0.8-1.0
Mid Gain	For Professional Auditorium where screen size is between 9mtrs and 14mtrs.	Flat	1.4
Hi – gain	For Cinemas and Theatres with screen size above 14mtrs	Curved	1.4-1.8

Gains above 1,8 is not recommended unless the seating, screen size and projector has been all integrated in the design phase itself, lack of any parameter in the design phase will yield into “hot spot”

Advantages of using a Gain Screen are

- We can achieve higher brightness level with lower lamp power
- With very large screens it may be essential to use gain screen to get SMPTE level brightness
- With digital projection, screen gain helps achieve brightness level

The Basic Disadvantage is the higher the gain factor the narrower is the viewing angle. Thus, while designing an Auditorium with Hi-gain screen the line of sight is an active component of the design parameters.

Depending upon the requirement and usage, the cyclorama screen can be designed, constructed and installed.

For Further Queries:

Effectron Luminex Limited
D-19/1, Okhla Industrial Area, Phase-II, New Delhi 110020 India
email: - info@effectron.co.in

www.effectron.co.in

Winch Specification

Winches in an auditorium helps in suspending Lights, Microphones, sceneries, Frill Bar, etc. The Theatrical winches are usually found in the stage area, with drives mounted on side wall, or on the Grid or on special platform. The Winches are connected to GI Pipe Bars with Steel Wire ropes and cable tray in cases where they are used with Lights/ Microphones. Winches are made of high grade non-reversing Gear Boxes and flange mounted Motors directly on Gear Boxes with Upper and Lower cutoff Limit Control Box.

Winches when used for

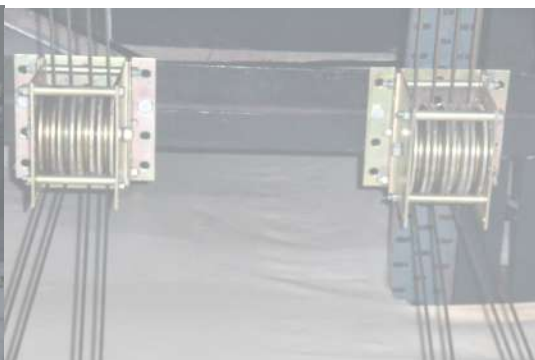
- Lights are called as Light Bars,
- Microphones are called as Mic Bars
- Sceneries are called as Set Bars
- Frills are called as Masking Bars

Winches can be manual or motorized.

A Typical Winch Set will comprise of a Gear Box, Winding Drum plates, Pullies, Steel Wire Rope, GI Pipe, Cable Duct, Cable Basket or Flip Flop, clamping Mechanism. Depending upon the convenience desired, a manual drive handle or a motor is docked to the gear box.



Typical installation of Drives



Bar suspension Pulley Blocks

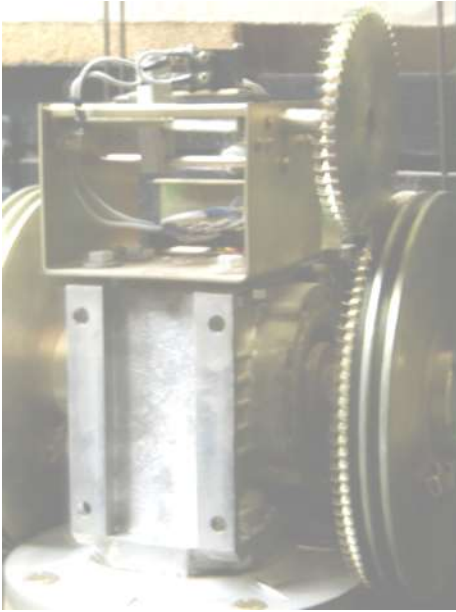
For Further Queries:

Effectron Luminex Limited

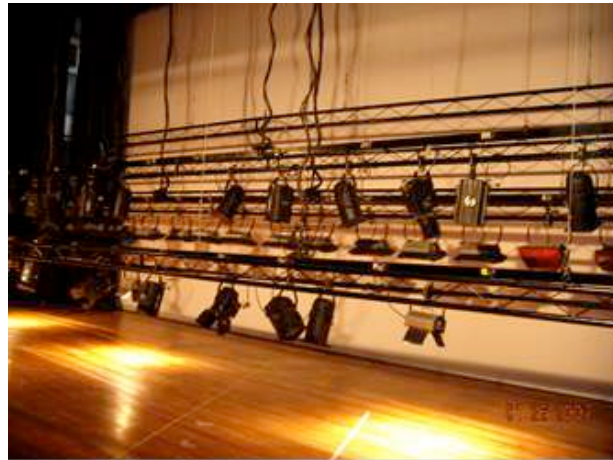
D-19/1, Okhla Industrial Area, Phase-II, New Delhi 110020 India

email: - info@effectron.co.in

www.effectron.co.in



Typical Motorized Light Bar drive



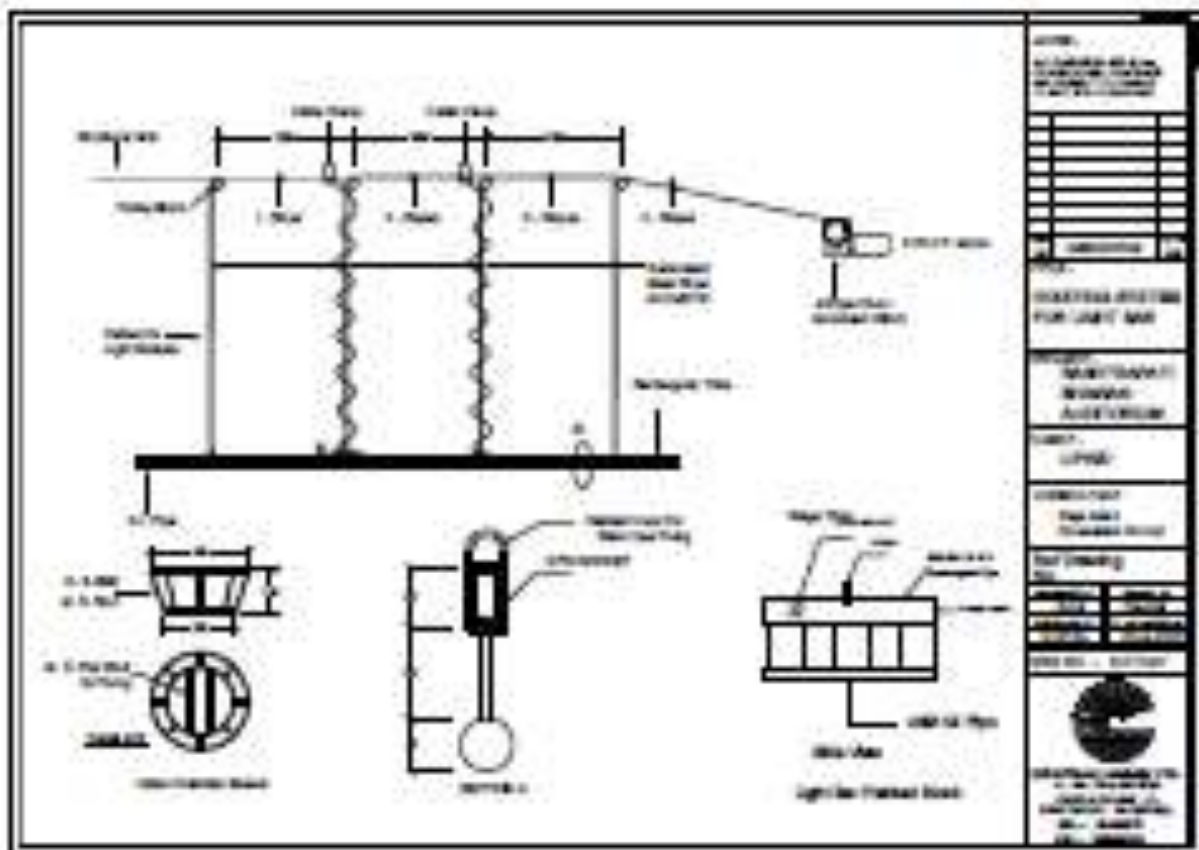
Installation at Sanskrit School, New Delhi, showing Multiple Bars like Light Bars, Set Bars, Mic Bar

GA of Standard Motorised Winch used for Light Bar

For Further Queries:

Effectron Luminex Limited
D-19/1, Okhla Industrial Area, Phase-II, New Delhi 110020 India
email: - info@effectron.co.in

www.effectron.co.in



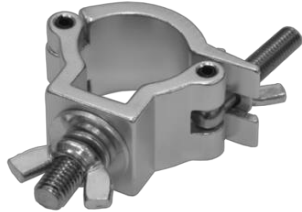
For Further Queries:

Effectron Luminex Limited
D-19/1, Okhla Industrial Area, Phase-II, New Delhi 110020 India
email: - info@effectron.co.in

Single Clamp -ELL-Alex-Clamp01

Clamp for Lights on truss - half coupler M8 - light duty clamp - load 100 kg
for tubing 48-51 mm (1.9"-2.0")

SPECIFICATIONS



DIAMETER	32-35mm (1.3-1.4inch)
LOAD CAPACITY	100kg

Double Clamp- ELL-Alex-Clamp02

Swivel clamp for truss - swivel coupler - load 500kg for tubing 48-51mm (1.9-2.0") - for truss

SPECIFICATIONS



DIAMETER	48-51mm (1.9-2.0inch)
LOAD CAPACITY	500kg

Single J Clamp-ELL-J-Clamp-01

J Clamp for Lights and bars on truss & grid - light duty clamp - load 75kg - for tubing 25-32mm 48-51 mm

SPECIFICATIONS



DIAMETER	32-35mm (1.3-1.4inch)
LOAD CAPACITY	100kg

For Further Queries:

Effectron Luminex Ltd.

D-19/1, Okhla Industrial Area, Phase-II, New Delhi 110020 India

Website: - www.effectron.co.in email: - info@effectron.co.in email: - info@effectron.co.in

DMX-512 Signal splitter 6 ways in rack mount



The 6 ports rack mount splitter is designed for system distribution of DMX-512 network. Use as easy as the normal DMX-512 splitter; plug and play with XLR 5 pin signal connectors.

Features

- Compatible for both DMX-512
- 1 U rack mount housing design
- Signal In/Thru (XLR 5pin) and 6 ports Signal buffered output (XLR 5 pin)
- Signal Line Out or Terminate push button
- CE / ETL/cETL and FCC marked

Technical Specifications		Environmental Data		
Supply Voltage:	AC100-240V, 50/60 Hz, 1A max.	Temperature:	0 to 35°C	
Standards Compliance:	CE and ETL/cETL marked	Humidity Range:	0 to 95% Non-condensing	
		Mechanical Data		
		Connections:	DMX512 Input (on rear of unit) 6 ports of output (on Front panel)	
		Weight:	2 kg	
		Dimensions:	482 x 185 x 44mm	

DMX512 6 ports splitter, 1U Rackmount



Brief introduction

1024 LIGHT CONTROLLER use Light mechanical buttons, stylish, fashion, single key life more than 50000000 times, can control up to 96 fixtures. It is compatible with the library in Avolite Pearl R20 format and featured with built-in shape effects of pan/tilt circle, RGB rainbow, beam dimming wave, etc. 10 Scenes and 10 built-in shapes can be output simultaneously. Faders can be used to output Scenes and adjust the intensity of the dimmer channels in the Scenes. Each Scene can be controlled by single high, middle, low sound setting.



Effectron Luminex Limited

D-19/1, Okhla Industrial Area, Phase-II, New Delhi 110020 India Website: -

www.effectron.co.in email: - info@effectron.co.in

Specifications

DMX channel	1024
Fixture	96
Re-patched Fixture address	Yes
Swop Pan/Tilt	Yes
Reversed channel output	Yes
Channel slope modification	Yes
Channels for each fixture	40 primary + 40 fine tune
Library	Avolite Pearl R20 library supported
Scene	60
Scenes to run simultaneously	10
Controllable Channels	250
Total Scene steps	600
Time control of Scenes	Fade in/out, LTP slope
Shapes for each Scene	5
Scene and dimmer by slider	Yes
Swop Scene	Yes
Flash Scene	Yes
Shape generator	Shapes of Dimmer, Pan/Tilt, RGB, CMY, Color, Gobo, Iris and Focus
Shapes to run simultaneously	10
Master slider	Global, playback, fixture
Real time blackout	Yes
Channel value by wheel	Yes
Channel value by slider	Yes
Dimmer by slider	Yes
USB Memory	FAT32 supported



Effectron Luminex Limited

D-19/1, Okhla Industrial Area, Phase-II, New Delhi 110020 India Website: -

www.effectron.co.in email: - info@effectron.co.in



ELL-PR-200



- ◆ Input Voltage: AC100V-AC240V 50/60Hz
- ◆ Power Consumption: Max.200W
- ◆ Lamp Specifications: 200W Warm White COB LED
- ◆ Lamp Life: More Than 50000 Hours
- ◆ Color Temperature: 3200K
- ◆ Light Lux: 85275Lux-470Lux(1M-15M)
- ◆ Color Rendering Index (CRI): Ra=90
- ◆ Dimming:0-100% Linear Dimming
- ◆ Beam Angle: 19°/26°/36° Optional
- ◆ Stroboscopic: Multiple Stroboscopic Functions
1-25Times Per Second
- ◆ Heat Dissipation: High Quality Radiator With No Noise Fan
- ◆ Display: 4-Button LCD Display
- ◆ Control Model: DMX 512, Automatic, Voice Control
- ◆ DMX Channel:1/3 Channel Models
- ◆ Waterproof Grade: IP20
- ◆ The Environment:-30°C~40°C
- ◆ Work Environment Tempereature: -30°C-40°C
- ◆ Packing Size:700 x 300 x 310 mm
- ◆ Net Weight:7Kg



200W LED Fresnel Spotlight

MODEL NO: ELL-FR-200Z

200W LED Fresnel Light is a single color WW or CW light.



Specifications

1. LED Light color: Single color WW or CW COB
2. Lifetime: Over 50000 Hours
3. Color Rendering Index (CRI): Ra> 95
4. Zooming Scale: 15-50°
5. Dimmer: 0~100% linearly adjustable
6. Control: DMX 512
7. Power Supply: Voltage AC 90V-260V, 50-60 Hz
8. Cooling System: No Noise Fan
9. Working Temperature: -30°~50°C

LED Bar CYC Light

MODEL NO: ELL-372B

Cyc BarELL-372 is a fixed Light Bar with super-bright RGBWA multiple LED's for enhanced smooth color mixing & linear dimming.



Specification

1. Source: LED
2. Wattage: 240W
3. Lamp Specifications: 72 pcs 3W (16R + 16G + 16B + 8W + 16A)
4. Controls: DMX 512/ Auto run & Master/Slave Stand Alone/ Sound Activation
5. Color: RGBWA
6. Dimmer/Strobe: ~100 Percent linearly adjustable/ Variable speed
7. Operating Voltage: 90-240V AC
8. Operating Temperature: 30°~40°C
9. Frequency: 50-60 Hz

150W LED PAR



MODEL NO: ELL-354-C

LED PAR with 54 pieces with 3W each is a 4in1 RGBW light which is highly efficient having rated life of more than 50000 hours.



Specifications

1. LED Light color: 3200K-5600K
2. Lifetime: Over 50000 Hours
3. Color Rendering Index (CRI): Ra> 90
4. Fixed Lens: 25°
5. Dimmer: 0~100% linearly dimming
6. Control: DMX / Manual
7. Refresh Frequency: 1800 Hertz
8. Power Supply: Voltage AC 90V-260V, 50-60 Hz
9. 5 Auto running Modes
10. Working Temperature: -20°~40°C
11. Waterproof Grade: IP20



Effectron Luminex Limited

D-19/1, Okhla Industrial Area, Phase-II, New Delhi 110020 India
email: - info@effectron.co.in

COB LED 4x100W BLINDER LIGHT

MODEL NO: ELL-FL-400

It's a COB LED Light with 4 pieces of 100W each having single color WW LED. It's a flicker free light with a Beam Angle of 30° having strobe effect. It is 0~100% linearly adjustable.



Specifications

1. LED Light color: Single color WW
2. Lifetime: Over 50000 Hours
3. Color Rendering Index (CRI): Ra> 90
4. Beam Angle: 30°
5. Dimmer: 0~100% linearly adjustable
6. Control: DMX 512
7. Refresh Rate: 11700 Hertz
8. Power Supply: Voltage AC 90V-260V, 50-60 Hz
9. Cooling System: No Noise Fan
10. Working Temperature: -30°~40°C